

21 MOSSWOOD ROAD

BERKELEY

PROPERTY SQ FT INFORMATION

MEASUREMENTS CALCULATED TO THE EXTERIOR WALLS

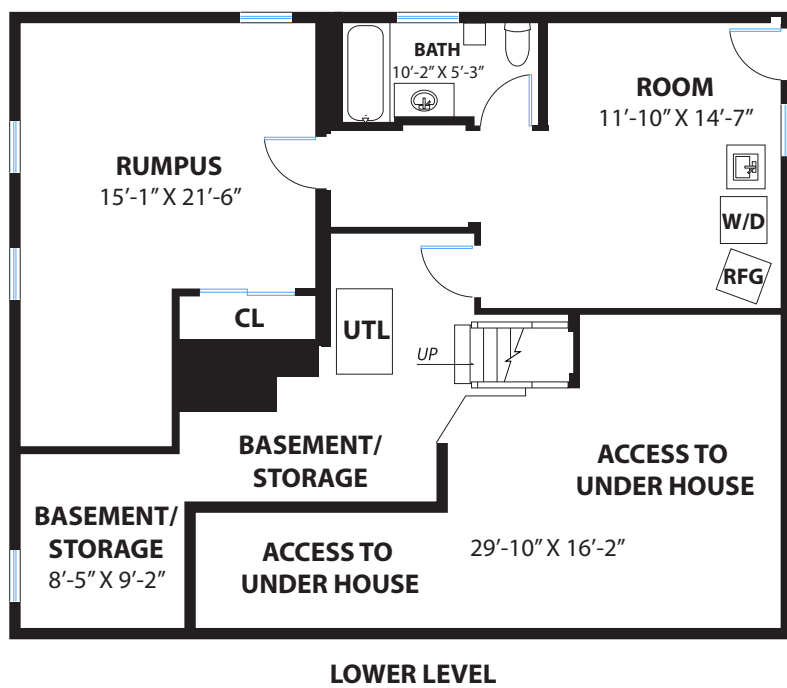
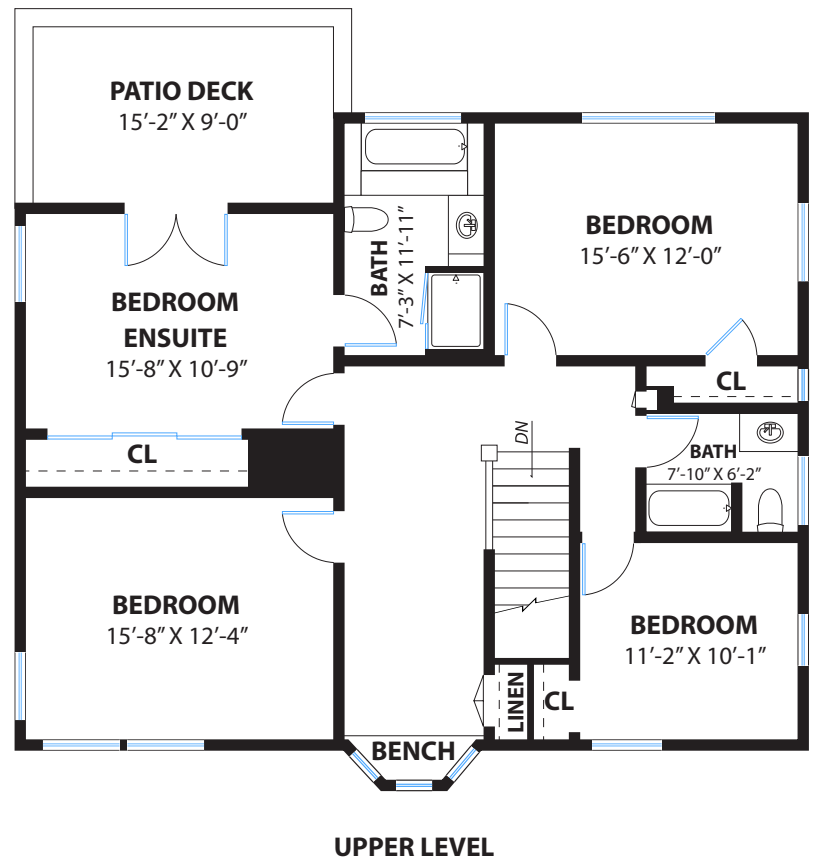
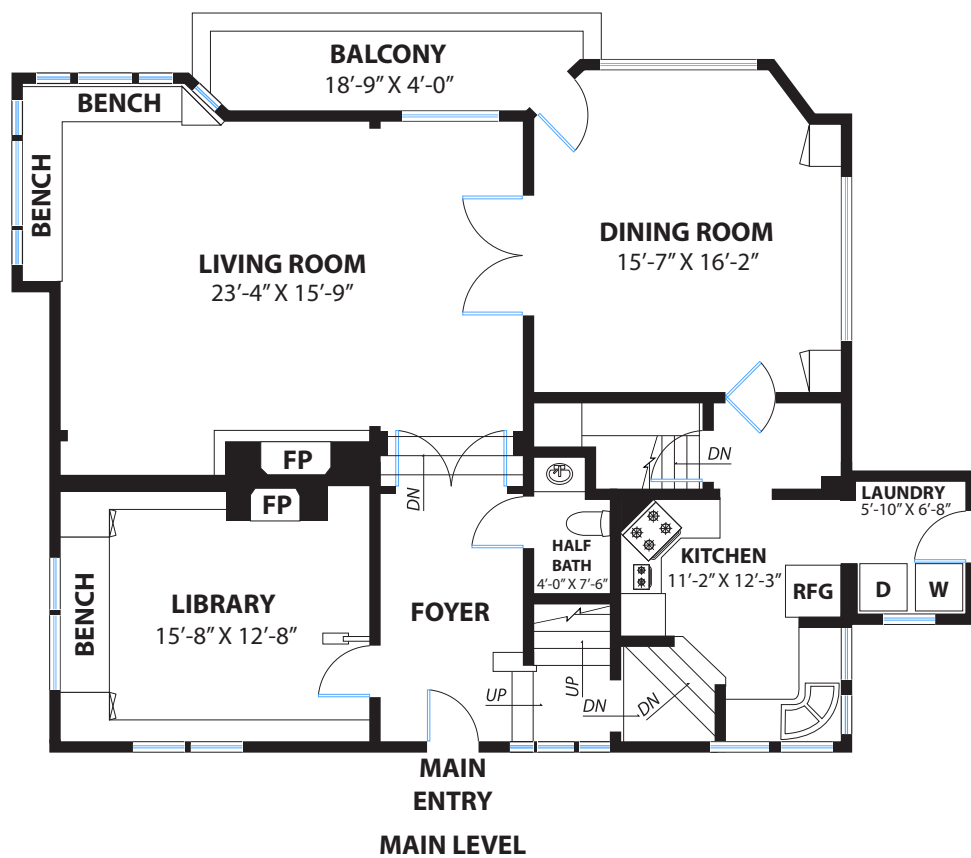
LIVING SPACE: 3336 SQ FT

- * Main House (Upper Level): 1232 Sq Ft
- * Main House (Main Level): 1414 Sq Ft
- * Main House (Lower Level): 690 Sq Ft

NON-LIVING SPACE: 502 SQ FT

- * Basement/Storage: 292 Sq Ft
- * Patio Deck: 138 Sq Ft
- * Balcony: 72 Sq Ft

COMBINED: 3838 Sq Ft



PRESENTED BY : LAURA ARECHIGA

DRE #: 01388149

DISCLAIMER: RENDERING BY OPEN HOMES PHOTOGRAPHY. ALL MEASUREMENTS ARE APPROXIMATE AND MAY NOT BE EXACT. DO NOT RELY ON THE ACCURACY OF THIS FLOOR PLAN WHEN DETERMINING THE PRICE OF A PROPERTY OR MAKING DECISIONS REGARDING BUYING OR SELLING OF PROPERTIES WITHOUT INDEPENDENT VERIFICATION.